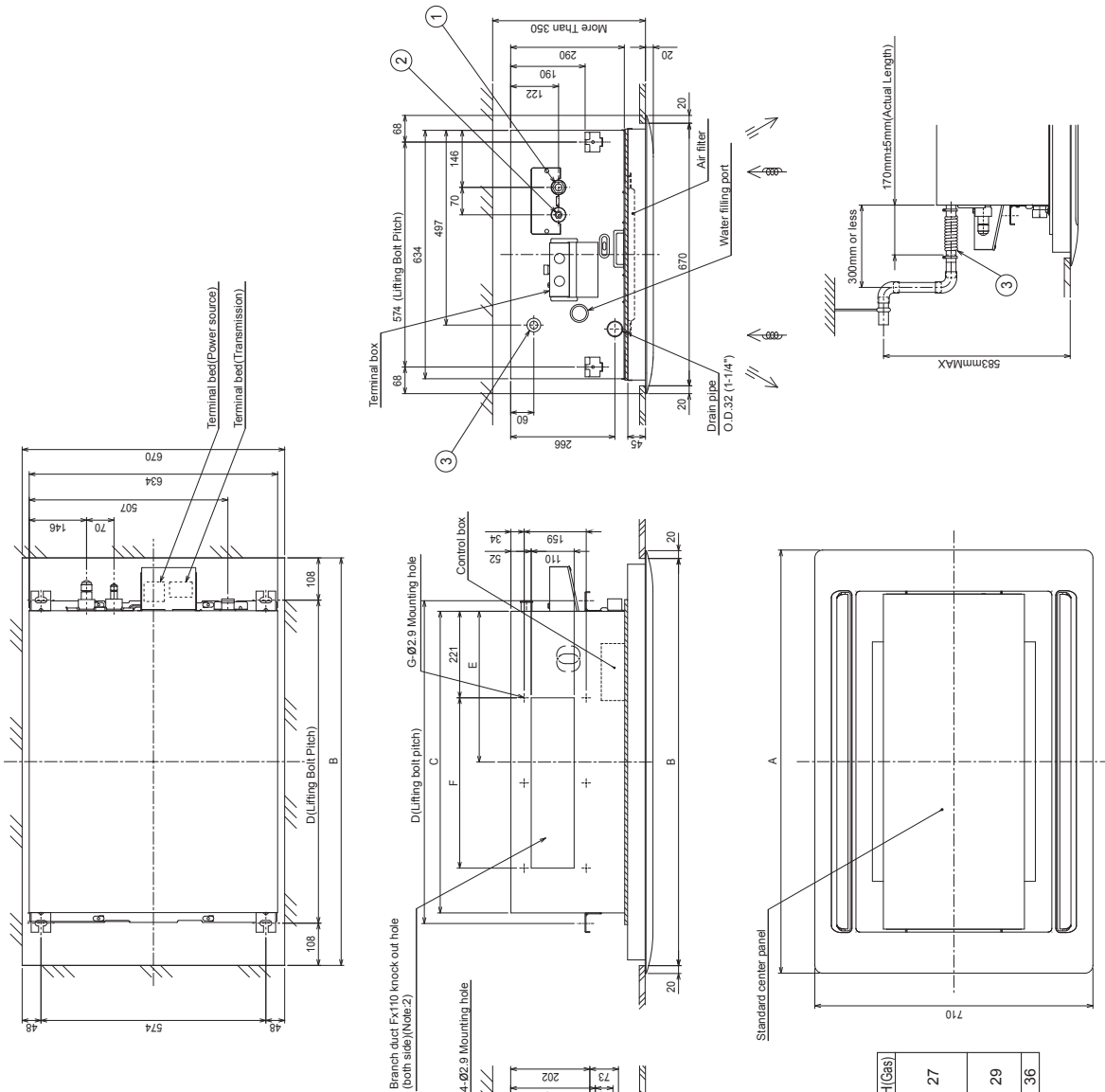


PLFY-P20, 25, 32, 40, 50, 63, 80, 100VLMD-E

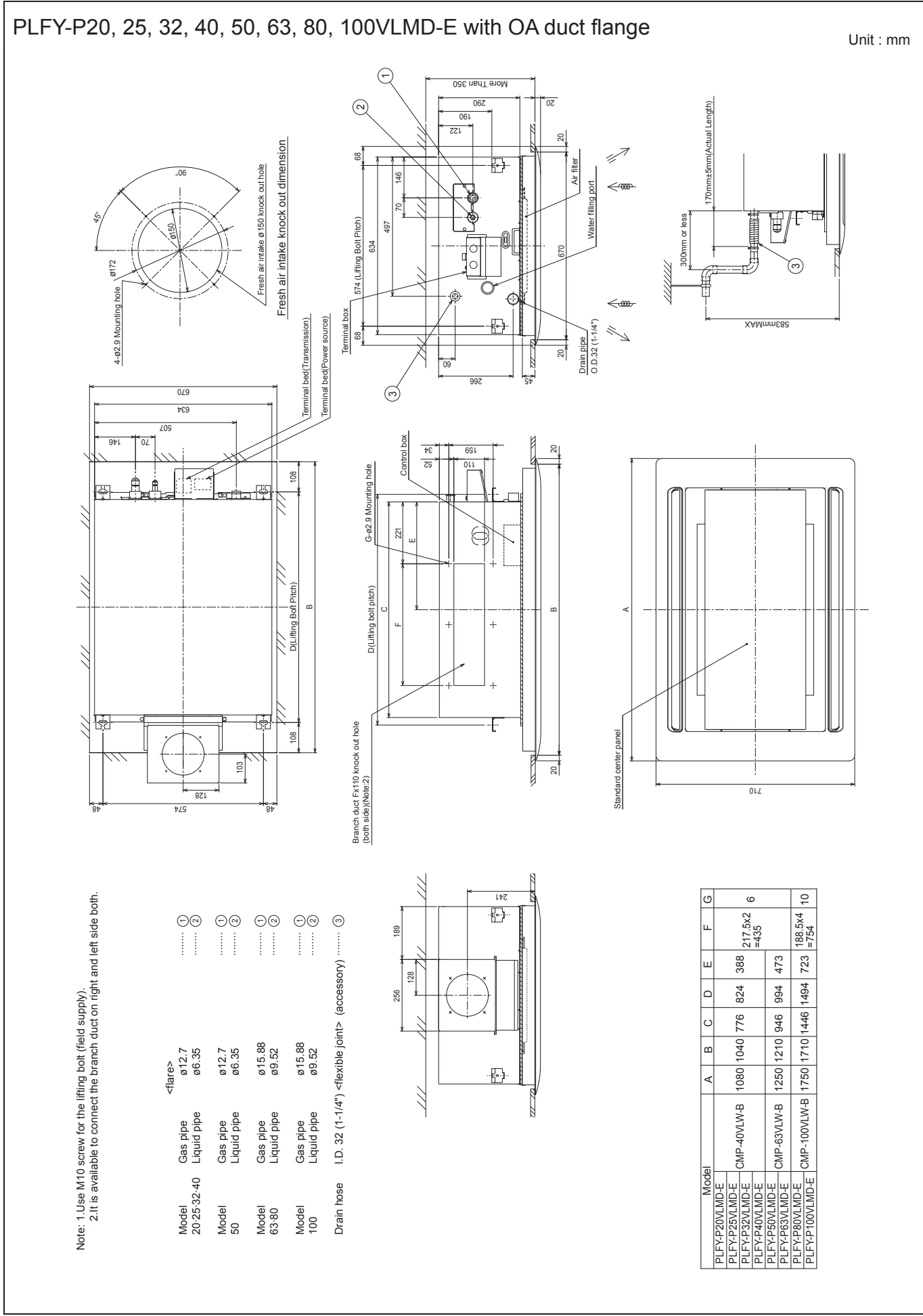
Unit : mm



Note: 1. Use M10 screw for the lifting bolt (field supply).
 2. It is available to connect the branch duct on right and left side both.

Model	<flare> Gas pipe Liquid pipe	① ø12.7 ø6.35	②
Model 20-25-32-40	Gas pipe Liquid pipe	ø12.7 ø6.35	① ②
Model 50	Gas pipe Liquid pipe	ø15.88 ø9.52	① ②
Model 63-80	Gas pipe Liquid pipe	ø15.88 ø9.52	① ②
Model 100	Gas pipe Liquid pipe	ø15.88 ø9.52	① ②
Drain hose	I.D. 32 (1-1/4") <flexible joint> (accessory)	③	

Model	A	B	C	D	E	F	G	H (Liquid)	H (Gas)
PLFY-P20VLMD-E	1080	1040	776	824	388	217.5x2 =435	6	17	27
PLFY-P25VLMD-E	1250	1210	946	994	473	188.5x4 =754	10	22	29
PLFY-P32VLMD-E	1750	1710	1446	1494	723			22	36



Model	A	B	C	D	E	F	G
PLFY-P20VLM-D-E	1080	1040	776	824	388	217.5x2	6
PLFY-P25VLM-D-E						=435	
PLFY-P32VLM-D-E							
PLFY-P40VLM-D-E							
PLFY-P50VLM-D-E	1250	1210	946	994	473		
PLFY-P63VLM-D-E							
PLFY-P80VLM-D-E	1750	1710	1446	1494	723	188.5x4	10
PLFY-P100VLM-D-E						=754	

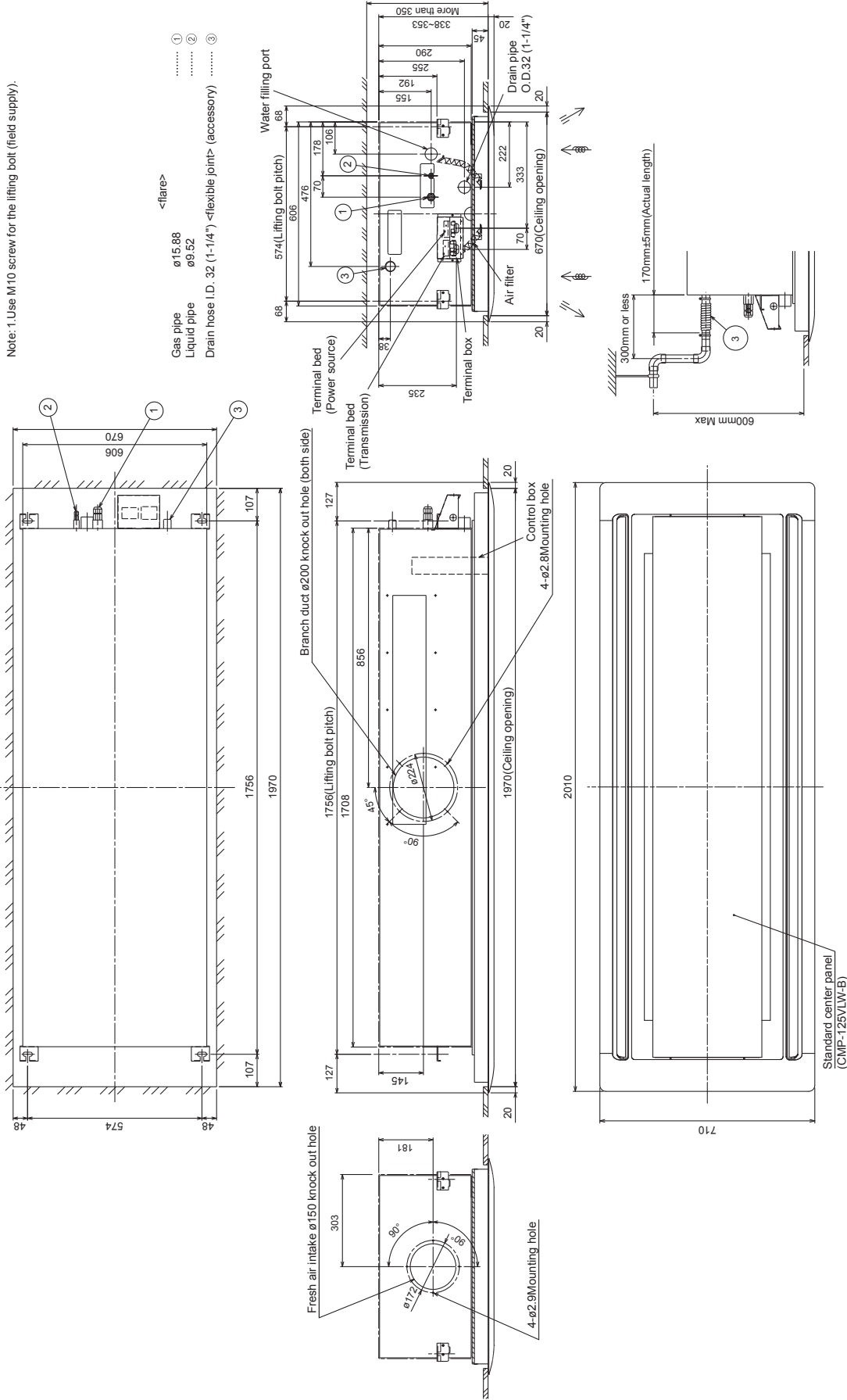
PLFY-P-VLMD-E

PLFY-P125VLMD-E

Unit : mm

Note: 1 Use M10 screw for the lifting bolt (field supply).

- ①
 - ②
 - ③
- <flare>
- Gas pipe $\phi 15.88$
 - Liquid pipe $\phi 9.52$
 - Drain hose I.D. $\phi 32$ (1-1/4") <flexible joints> (accessory)



PLFY-P-VLMD-E