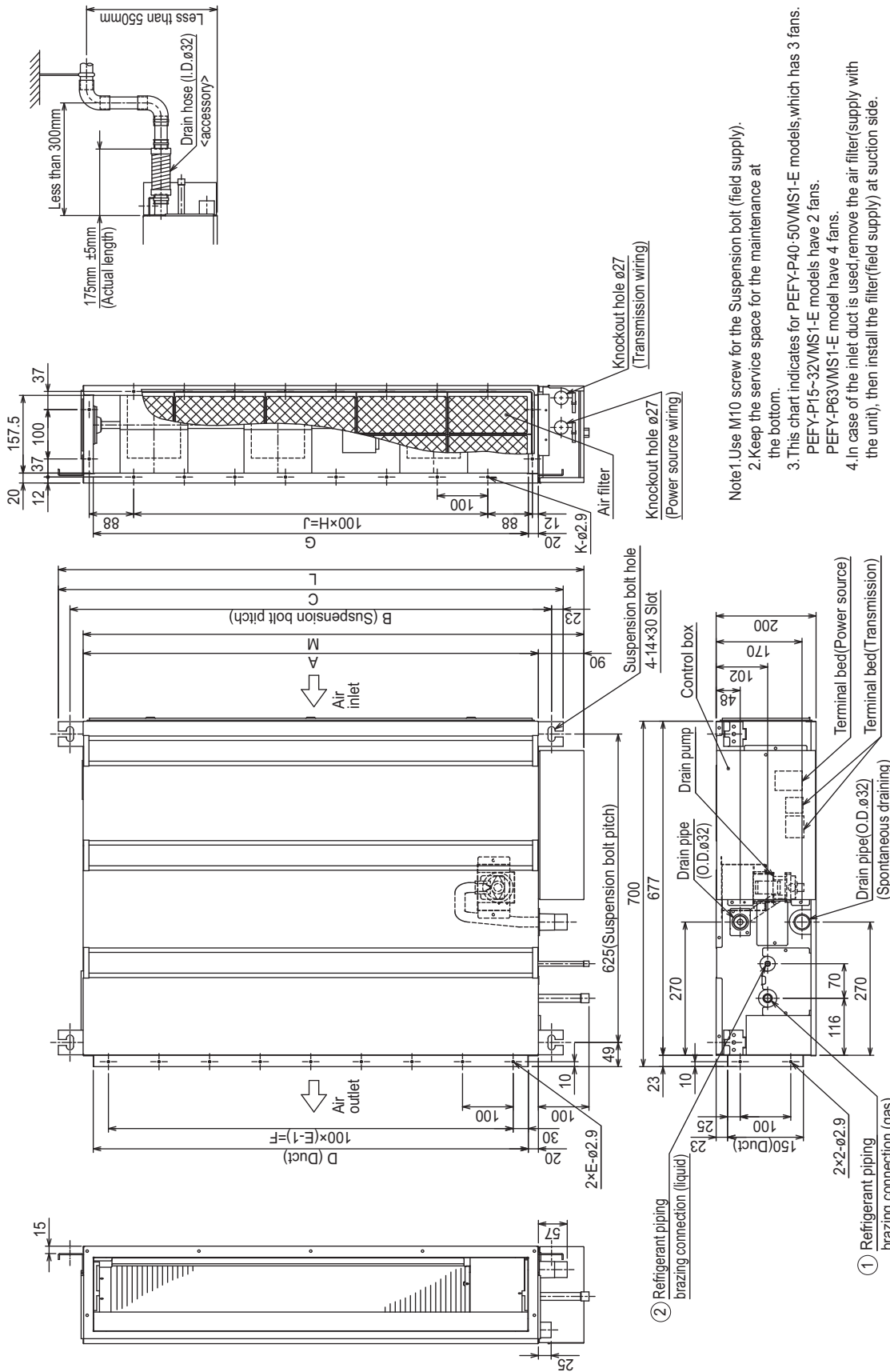


## 2. EXTERNAL DIMENSIONS

Ceiling concealed (Low noise/Low static pressure type)

PEFY-P15, 20, 25, 32, 40, 50, 63VMS1-E

Unit: mm



Note 1 Use M10 screw for the Suspension bolt (field supply).  
 2. Keep the service space for the maintenance at the bottom.  
 3. This chart indicates for PEFY-P40-50VMS1-E models, which has 3 fans. PEFY-P15-32VMS1-E models have 2 fans. PEFY-P63VMS1-E model have 4 fans.  
 4. In case of the inlet duct is used, remove the air filter (supply with the unit), then install the filter (field supply) at suction side.

\*1: R410A outdoor unit  
 \*2: R407C, R22 outdoor unit

Model	A	B	C	D	E	F	G	H	J	K	L	M	① Gas pipe	② Liquid pipe
PEFY-P15, 20, 25, 32VMS1-E	700	752	798	660	7	600	660	5	500	16	839	790	ø12.7	ø6.35
PEFY-P40VMS1-E	900	952	998	860	9	800	860	7	700	20	1039	990	ø12.7	ø6.35
PEFY-P50VMS1-E													*1	*2
PEFY-P63VMS1-E	1100	1152	1198	1060	11	1000	1060	9	900	24	1239	1190	ø15.88	ø9.52

PEFY-P-VMR-E-L/R, VMS1(L)-E

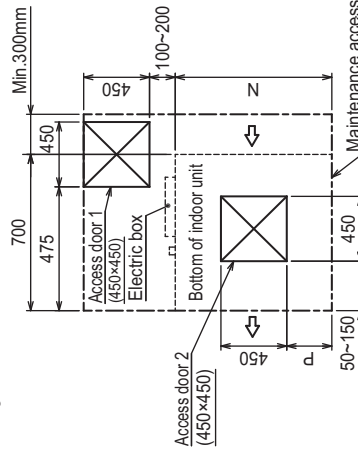
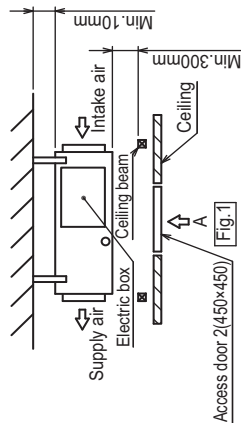
PEFY-P15, 20, 25, 32, 40, 50, 63VMS1-E

Unit: mm

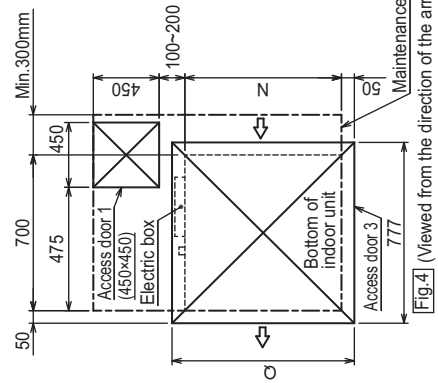
[Maintenance access space]  
 Secure enough access space to allow for the maintenance, inspection, and replacement of the motor, fan, drain pump, heat exchanger, and electric box in one of the following ways.  
 Select an installation site for the indoor unit so that its maintenance access space will not be obstructed by beams or other objects.

- (1) When a space of 300mm or more is available below the unit between the unit and the ceiling. (Fig. 1)
- Create access door 1 and 2 (450x450mm each) as shown in Fig. 2.
- (Access door 2 is not required if enough space is available below the unit for a maintenance worker to work in.)

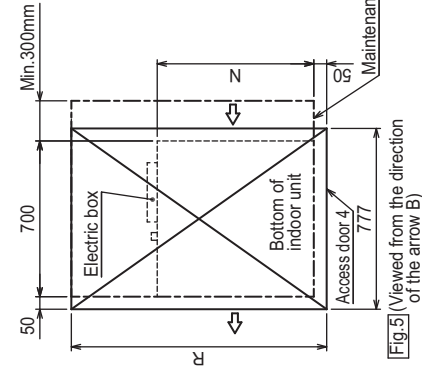
- (2) When a space of less than 300mm is available below the unit between the unit and the ceiling.  
 (At least 20mm of space should be left below the unit as shown in Fig. 3.)
- Create access door 1 diagonally below the electric box and access door 3 below the unit as shown in Fig. 4.
- or
- Create access door 4 below the electric box and the unit as shown in Fig. 5.



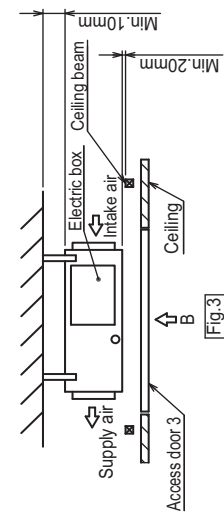
[Fig. 2] (Viewed from the direction of the arrow A)



[Fig. 4] (Viewed from the direction of the arrow B)



[Fig. 5] (Viewed from the direction of the arrow B)



[Fig. 3]

Model	N	P	Q	R
PEFY-P15,20,25,32VMS1-E	700	50~150	800	1300
PEFY-P40VMS1-E	900	150~250	1000	1500
PEFY-P50VMS1-E			1200	1700
PEFY-P63VMS1-E	1100	250~350	1200	1700